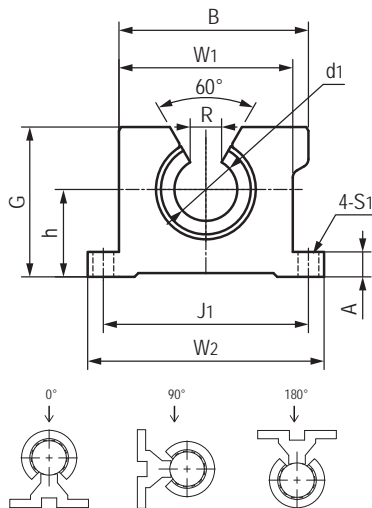


LINPB-11GK-IN 开口直线轴承座 Open pillow blocks



- 开口型轴承座设计
 - 高精度与滚珠轴承相同
 - 标准滑动膜材料TEFPLAS® B
 - 自调心铝合金座孔
 - 螺栓固定
 - 免维护、低噪音
 - 使用温度 ± 200℃
- Open housing design
 - High precision similar to preloaded ball bearing
 - Standard liner material TEFPLAS® B
 - Self-aligning aluminum housing
 - Secured by bolts
 - Maintenance-free and low noise
 - Operation temperature ± 200℃

标准规格 Standard specifications



产品编码 Part No.:

LINPB-11GK-16-IN

英制 Inch size

轴承内径 Inner diameter

 开口设计直线轴承座
Pillow block, open design

长设计 Long design

滑动膜 Liner: TEFPLAS® B

轴 Shaft: h6-h7

| 产品编码 Part No. | d ₁ [Inch] | | h [Inch] | W ₁ [Inch] | W ₂ [Inch] | J ₁ [Inch] | J ₂ [Inch] | L [Inch] | G [Inch] | B [Inch] | R [Inch] | S ₁ [Inch] |
|------------------|-----------------------|--------|-------------|--------------------------|--------------------------|--------------------------|--------------------------|-------------|-------------|-------------|-------------|--------------------------|
| | Min. | Max. | | | | | | | | | | |
| LINPB-11GK-08-IN | 0.5002 | 0.5013 | 0.687 | 1.375 | 2.000 | 1.688 | 1.000 | 1.500 | 1.125 | 1.438 | 0.313 | 5/32 |
| LINPB-11GK-10-IN | 0.6252 | 0.6263 | 0.875 | 1.750 | 2.500 | 2.125 | 1.125 | 1.750 | 1.438 | 1.750 | 0.375 | 3/16 |
| LINPB-11GK-12-IN | 0.7503 | 0.7516 | 0.937 | 1.875 | 2.500 | 2.375 | 1.250 | 1.880 | 1.563 | 1.938 | 0.438 | 3/16 |
| LINPB-11GK-16-IN | 1.0003 | 1.0016 | 1.187 | 2.385 | 3.250 | 2.875 | 1.750 | 2.630 | 1.938 | 2.438 | 0.563 | 7/32 |
| LINPB-11GK-20-IN | 1.2504 | 1.2519 | 1.500 | 3.000 | 4.000 | 3.5 | 2.000 | 3.380 | 2.500 | 3.125 | 0.625 | 7/32 |
| LINPB-11GK-24-IN | 1.5004 | 1.5019 | 1.750 | 3.500 | 4.750 | 4.125 | 2.500 | 3.750 | 2.875 | 3.625 | 0.750 | 9/32 |

| 产品编码 Part No. | 内装轴承 Bearing | 轴径 Shaft [Inch] | F max. [N] 最大动载荷 Dynamic Load | | | F max. [N] 最大静载荷 Static Load | | | 重量 Weight [g] |
|------------------|------------------|--------------------|----------------------------------|------------------|-------|---------------------------------|-------|-------|------------------|
| | | | 0° | 90° | 180° | 0° | 90° | 180° | |
| | | | LINPB-11GK-08-IN | LINPB-11RK-08-IN | 1/2 | 1995 | 3724 | 3985 | |
| LINPB-11GK-10-IN | LINPB-11RK-10-IN | 5/8 | 2995 | 5594 | 5990 | 5990 | 11187 | 11980 | 226.8 |
| LINPB-11GK-12-IN | LINPB-11RK-12-IN | 3/4 | 3901 | 7275 | 7793 | 7803 | 14550 | 15587 | 263.1 |
| LINPB-11GK-16-IN | LINPB-11RK-16-IN | 1 | 7221 | 13466 | 14424 | 14442 | 26931 | 28847 | 453.6 |
| LINPB-11GK-20-IN | LINPB-11RK-20-IN | 1-1/4 | 10541 | 19663 | 21055 | 21081 | 39326 | 42110 | 907.2 |
| LINPB-11GK-24-IN | LINPB-11RK-24-IN | 1-1/2 | 14451 | 26976 | 28895 | 28902 | 53953 | 57789 | 1360.8 |